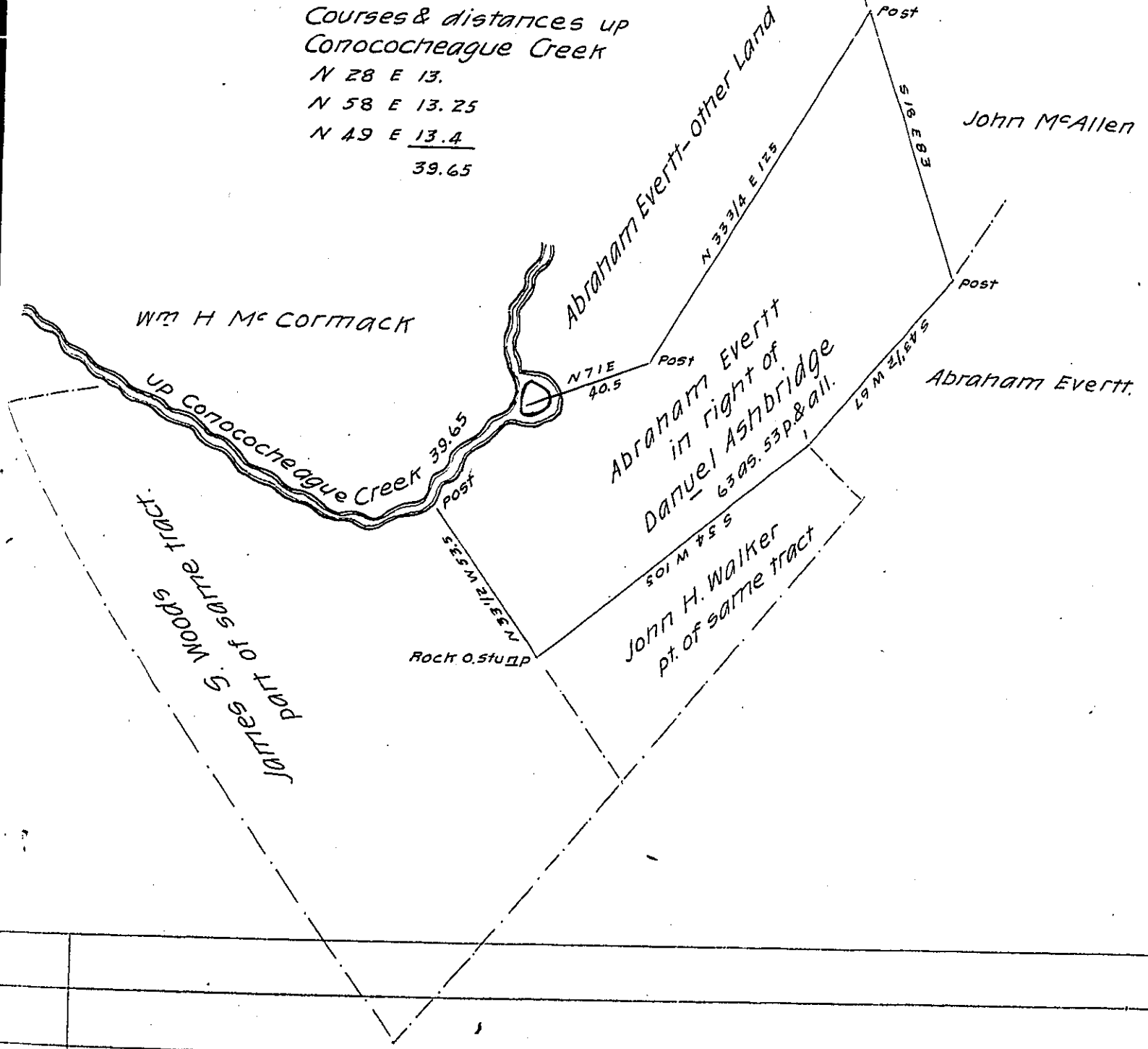


*Courses & distances up  
Conococheague Creek*

*N 28 E 13.  
N 58 E 13.25  
N 49 E 13.4  
39.65*



*Draught of a tract of land in Metal (formerly Farnet) Township  
Franklin County Pa Containing sixty three acres and fifty three per-  
ches and allowance of six per cent for Roads &c being part of one hun-  
dred and sixty two acres and seventy perches & allowance surveyed  
in pursuance of an order of Survey granted to Daniel Ashbridge dated  
December 27th 1768, No. 5308.*

*Surveyed the above part for Abraham Evertt December 8th 1864*

*To Emanuel Kuhn C.S.*

*J. M. Campbell Esq*

*Surveyor General.*

*IN TESTIMONY that the above is a copy of the original remaining on file in  
the Department of Internal Affairs of Pennsylvania, made  
conformably to an Act of Assembly approved the 16th day of  
February, 1833, I have hereunto set my Hand and caused  
the Seal of said Department to be affixed at Harrisburg,  
this fifteenth day of August 1904*

*Grace B. Brown*  
*Secretary of Internal Affairs.*